



PRODUCTION BIBLE

last update

November 2015

FOR THE LATEST VERSION OF THIS DOCUMENT
PLEASE DOWNLOAD IT FROM
www.viperclub.eu/files/vipertheatre-productionbible.pdf



We welcome you to the Viper theatre and hope you will have a nice concert!

**To make everything work out in the best possible way during the evening,
we kindly ask you to read these info sheets.**



TECH SPEC.

Stage size:

8m. X 8m. - height from dancefloor 1m.

Barrier:

In-house pit barrier

Total House power:

90 kw

LIVE P.A.:

2x stack with 4 x Martin Audio W8LC

4x Martin Audio WS218X

8x Lab Gruppen FP3400 Power Amplifiers

2x XTA DP 426 processor

Stage:

1x Monitor Console Soundcraft SM 20 47ch, 12 aux

8x Martin Audio 1200 wedge monitor

2x HandK 18in. stage sub

2x bss dpr stereo gate

2x dbx 166A stereo compressor

1x Yamaha SPX 900

5x DBX1231 Graphic EQ, 31 bande, 2ch

2x Lab Gruppen Q10000 4ch Power Amplifiers

6x VEAM SubSnakes 8ch

Front of house desk:

1x Mic Multicord 48ch, passive

1x Aux returns Multicord 8ch

1x Mixer Midas Heritage H3000 48ch

Outboard

1x DBX 1231 Stereo 31 bands Graphic Eq

1x Lexicon PCM70

1x Yamaha SPX990

1x Yamaha SPX900

1x Lexicon PCM 91

1x Yamaha REV500

1x TC electronics D-2

1x DBX 566 Tube compressor 2 ch

2x DBX 160A comp

2x DBX 166A comp 2ch

2x BSS DPR402 Comp 2ch

2x Drawmer Punch MX40 quad Gate

raisers:

2x PAV 20/40/60/80/100

DI Boxes:

4x AudiBox ProDi active

2x EMO Stereo Passive DI

2x LA - D12 - Active mono DI

Dynamic mics:

5x Shure SM58

2x Shure Beta 58A

5x Shure SM57

2x Sennheiser e604

2x Sennheiser e602

1x Sennheiser e902

1x AKG D112

Condenser mics:

3x Shure PG81

2x AKG 451

wireless mics:

1x SM58 handheld radio + BLX serie receiver

Mic Stands:

12x Tall boom Stands

2x Table Stands

4x Short boom stands

Dj Stuff:

1x Pioneer DJM-800

2x Technics SL-1210 MK2 turntable

2x Pioneer CDJ-1000 MK3

1x Allen Heat X-one 92

2x Pioneer Cdj 100

2x Technics SL-1200 MK2 turntable

Lightning desk:

ChamSys PC Wing

Video Control:

2x DVD player

2x 3500 Ansi Lumen LCD XGA Projector

1x Motorized projection screen 4x3mt. on backtruss

First floor balcony area/bar:

2x 42" Plasma screen

Lighting system stage:

4x Robe 575 XT spot moving head

4x Bars of ACL(4 each)

2x bars of 5 Led pars 240 volts

4x PAR 64 1000w 240v

4x Blinder 2 cells

1x Strobe 1500w

1x standard smoke machine

Lightning system DanceHall:

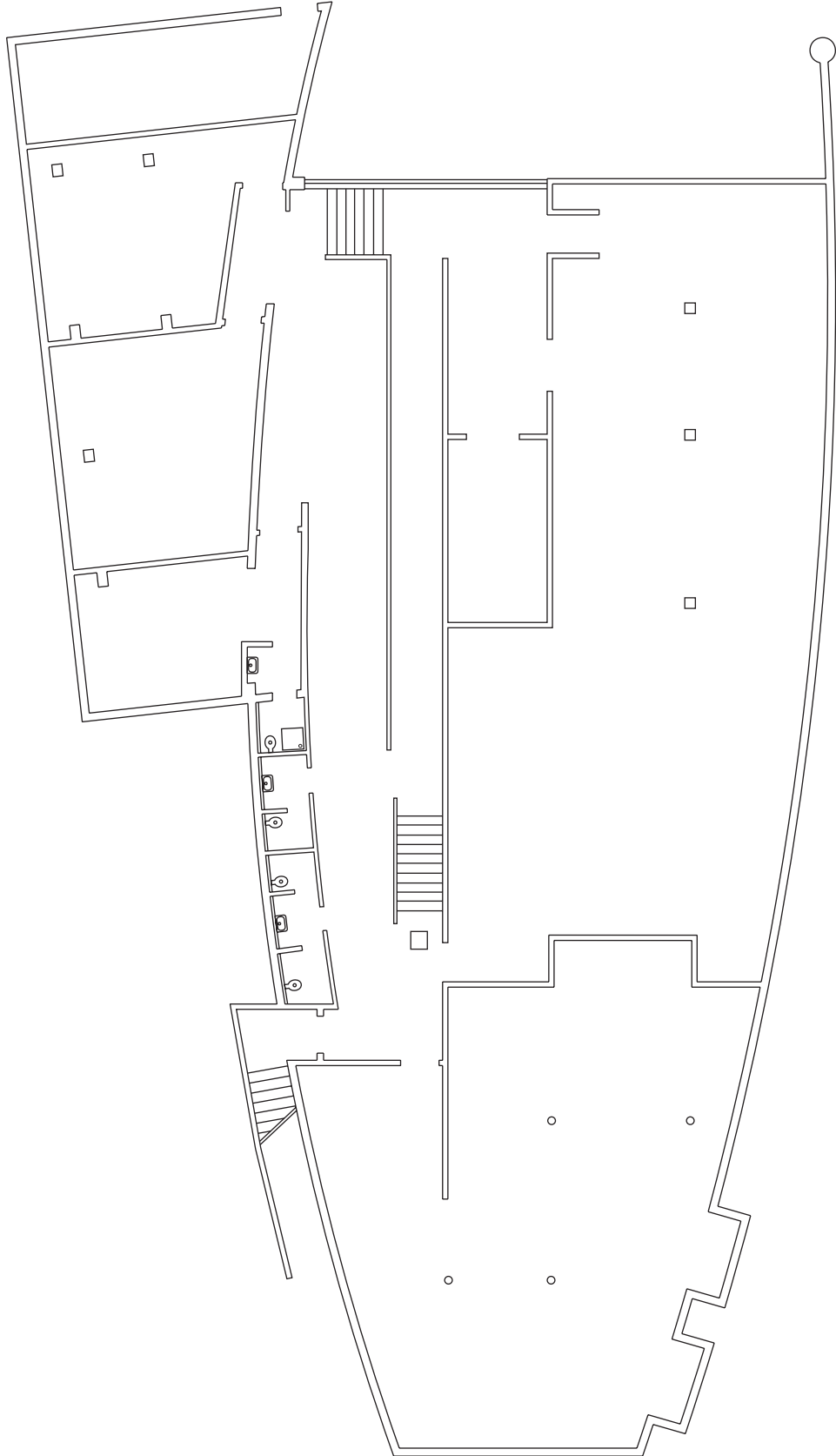
2x Robe 250 xt wash moving head

2x Robe 250 xt Spot moving head

8x Led Pars

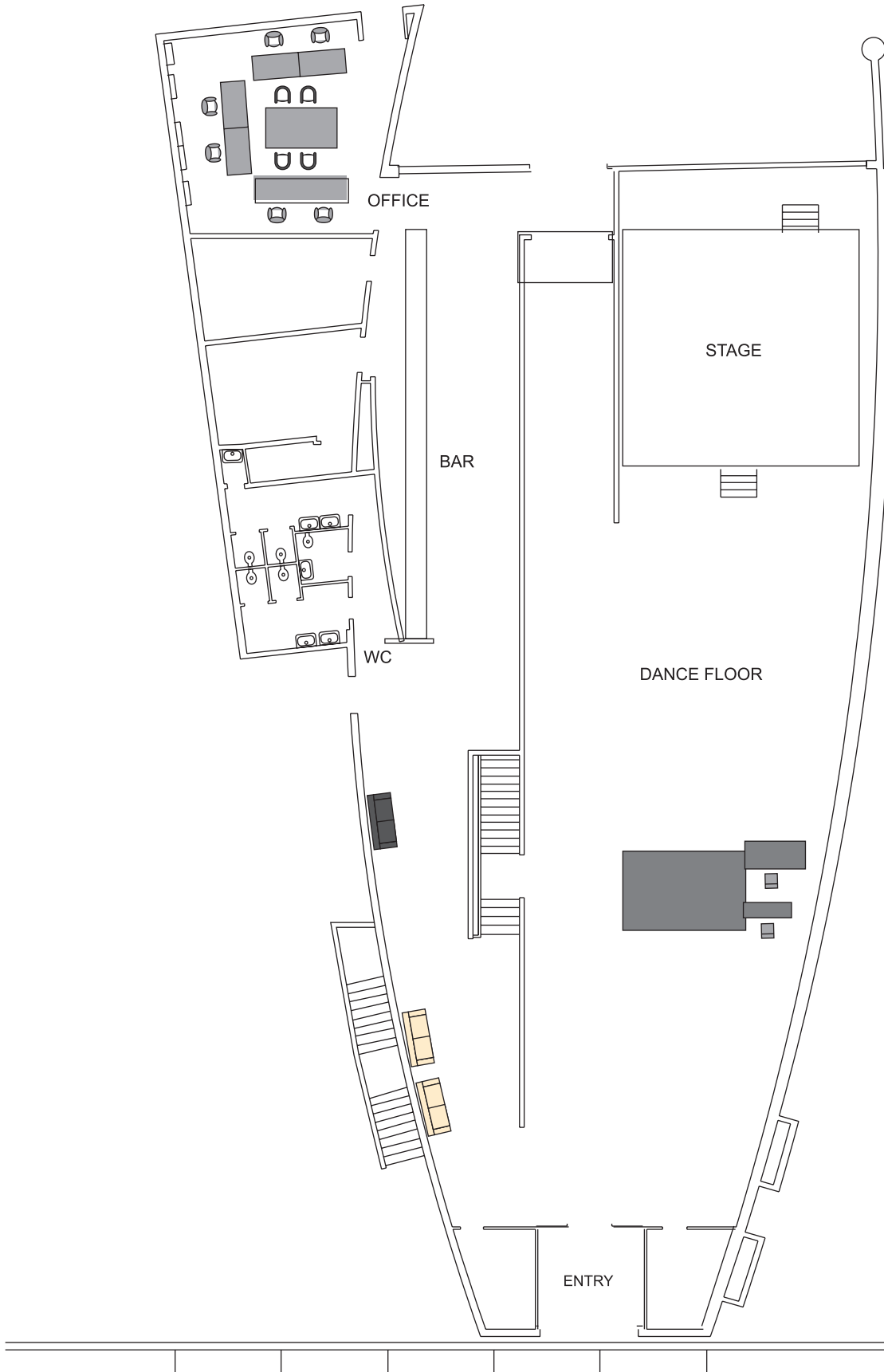


FLOORPLANS
Lower ground floor



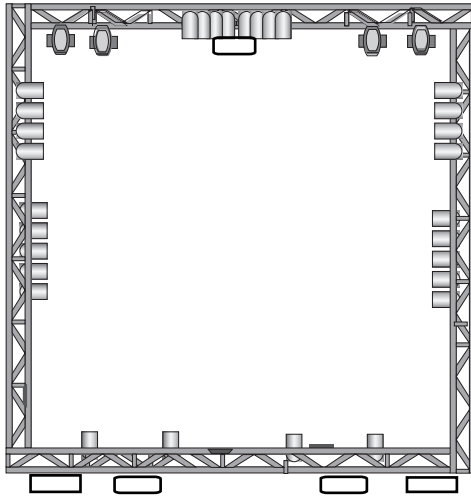


Ground floor



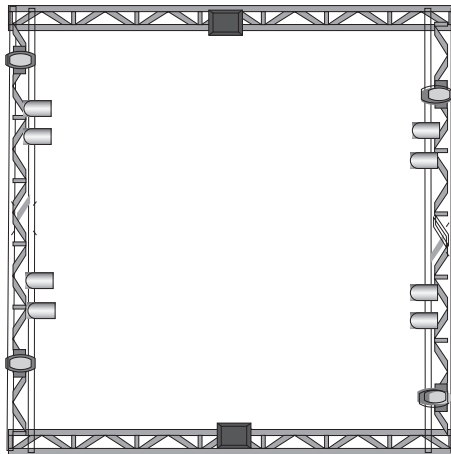


Lightning plot stage



4x Spot Robe 575xt spot Moving head
4x Bars of ACL(4 each)
2x bars of 5 Led pars 240 volts
4x Par 64 1000w
1x Strobe 1500
4x Blinder 2 cells

Lightning plot house



2x Robe 250 xt wash moving head
2x Robe 250 xt spot moving head
8x Led Pars



DMX CHAINS AND ADDRESSES

Universe "A" (Stage)

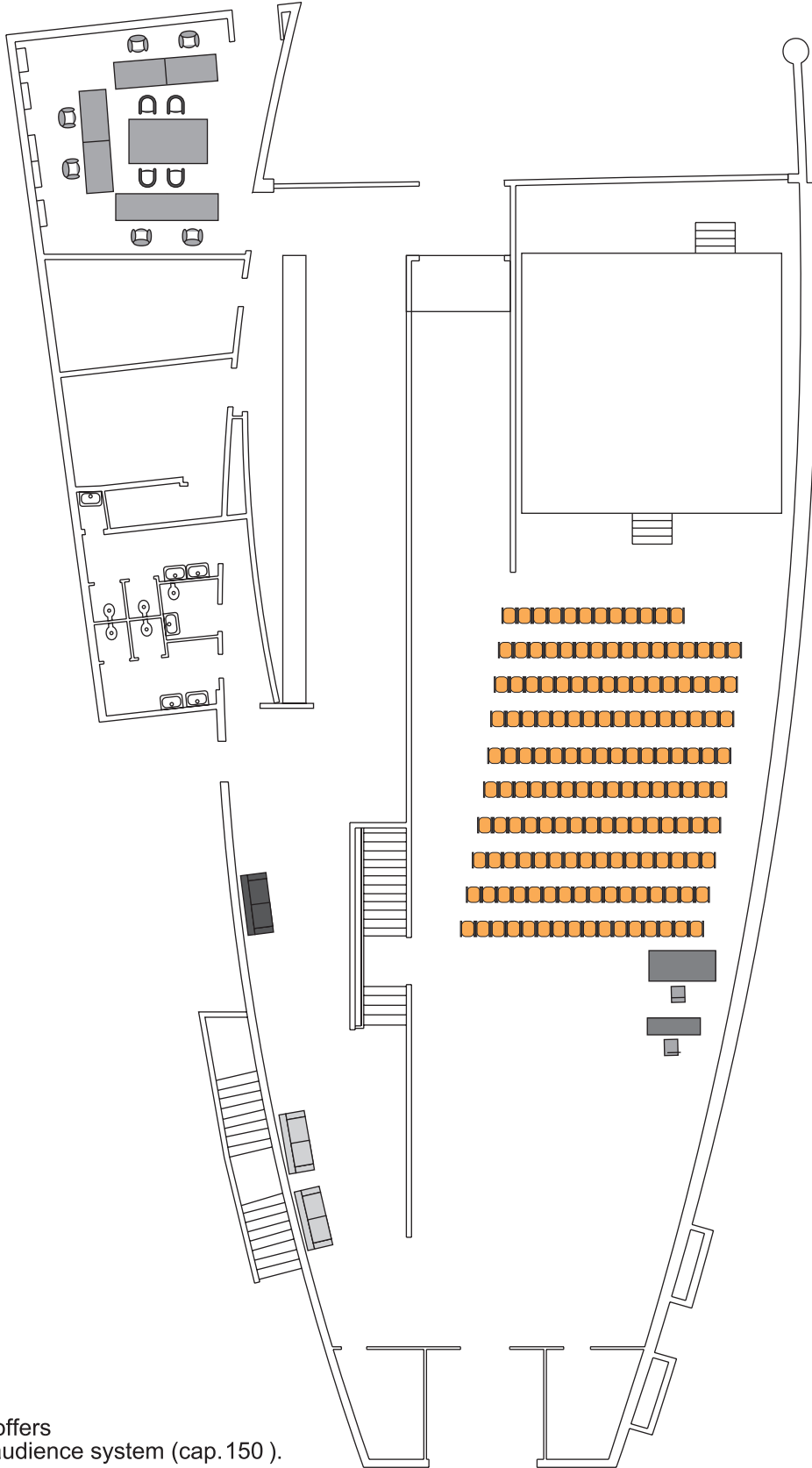
DMX Ch	Heads and Dimmers
1	Blinder FOH LEFT 1 - 2
2	Front PAR 1 (FOH LEFT)
3	Front PAR 2 (FOH LEFT)
4	Blinder FOH RIGHT 3 - 4
6	Front PAR 4 (FOH RIGHT)
8	Front PAR 3 (FOH RIGHT)
9	ACL bars BackTruss
10	ACL bars External/Side Truss
25	Smoke Machine (Generic Dimmer/H63)
100	Robe 575XT Spot 1 BackTruss
120	Robe 575XT Spot 2 BackTruss
140	Robe 575XT Spot 3 BackTruss
160	Robe 575XT Spot 4 BackTruss
200	ParLed 1 Litecraft AT10 Left Side Truss
208	ParLed 2 Litecraft AT10 Left Side Truss
216	ParLed 3 Litecraft AT10 Left Side Truss
224	ParLed 4 Litecraft AT10 Left Side Truss
232	ParLed 5 Litecraft AT10 Left Side Truss
240	ParLed 6 Litecraft AT10 Right Side Truss
248	ParLed 7 Litecraft AT10 Right Side Truss
256	ParLed 8 Litecraft AT10 Right Side Truss
264	ParLed 9 Litecraft AT10 Right Side Truss
272	ParLed 10 Litecraft AT10 Right Side Truss
510	Stage Strobe backtruss ch1 (generic/H33)
511	Stage Strobe backtruss ch2 (generic/H34)

Universe "B" (DanceHall)

DMX Ch	Heads and Dimmers
1	Robe 250XT wash (Entrance side)
17	Robe 250XT Wash (Entrance side)
40	Robe 250XT Spot (Stage side)
60	Robe 250XT Spot (Stage side)
80	ParLed 1 Litecraft AT10
88	ParLed 2 Litecraft AT10
96	ParLed 3 Litecraft AT10
104	ParLed 4 Litecraft AT10
112	ParLed 5 Litecraft AT10
120	ParLed 6 Litecraft AT10
128	ParLed 7 Litecraft AT10
136	ParLed 8 Litecraft AT10



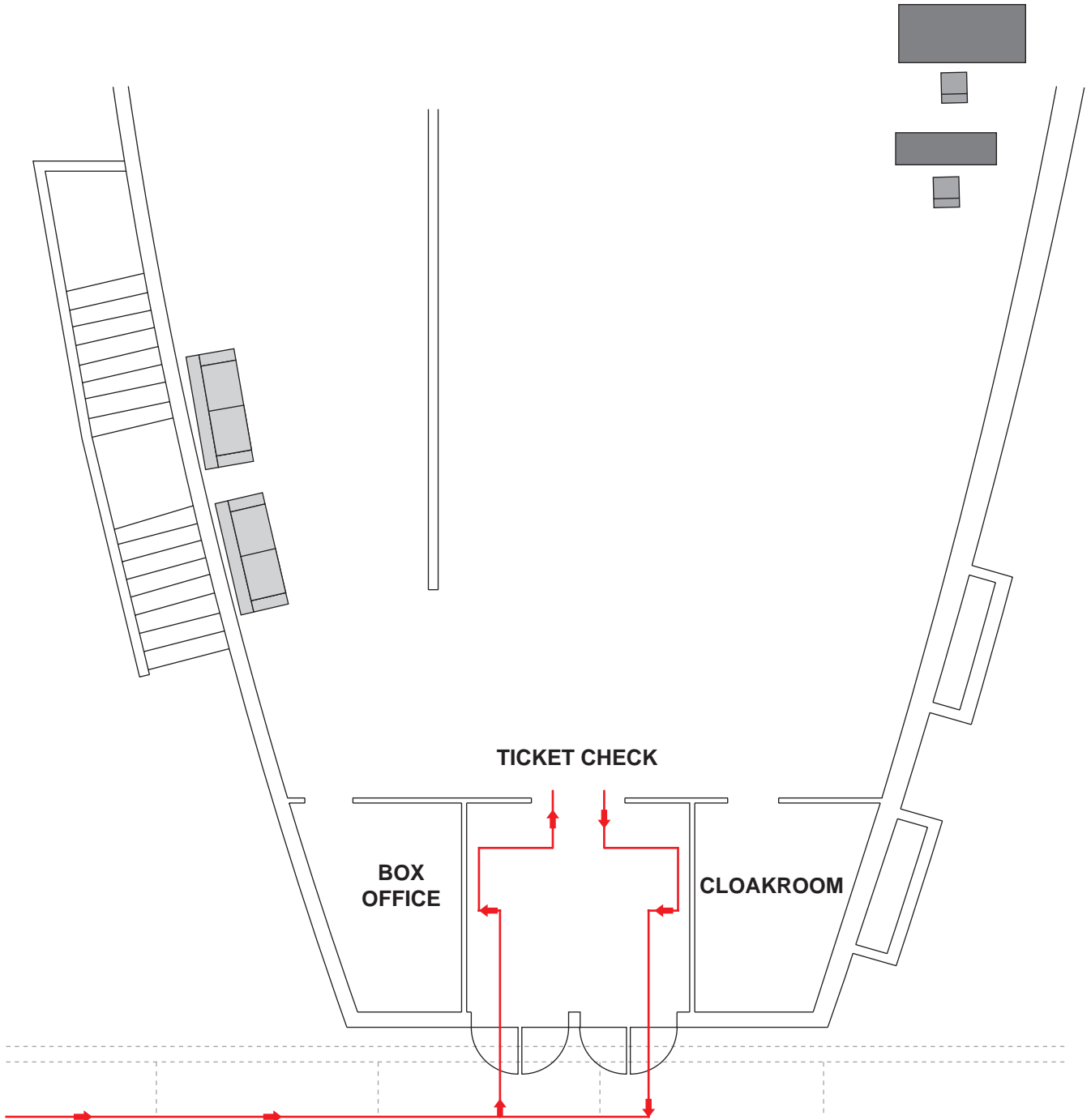
SEATED FORMAT DETAILS



Viper Theatre offers a fully seated audience system (cap. 150).



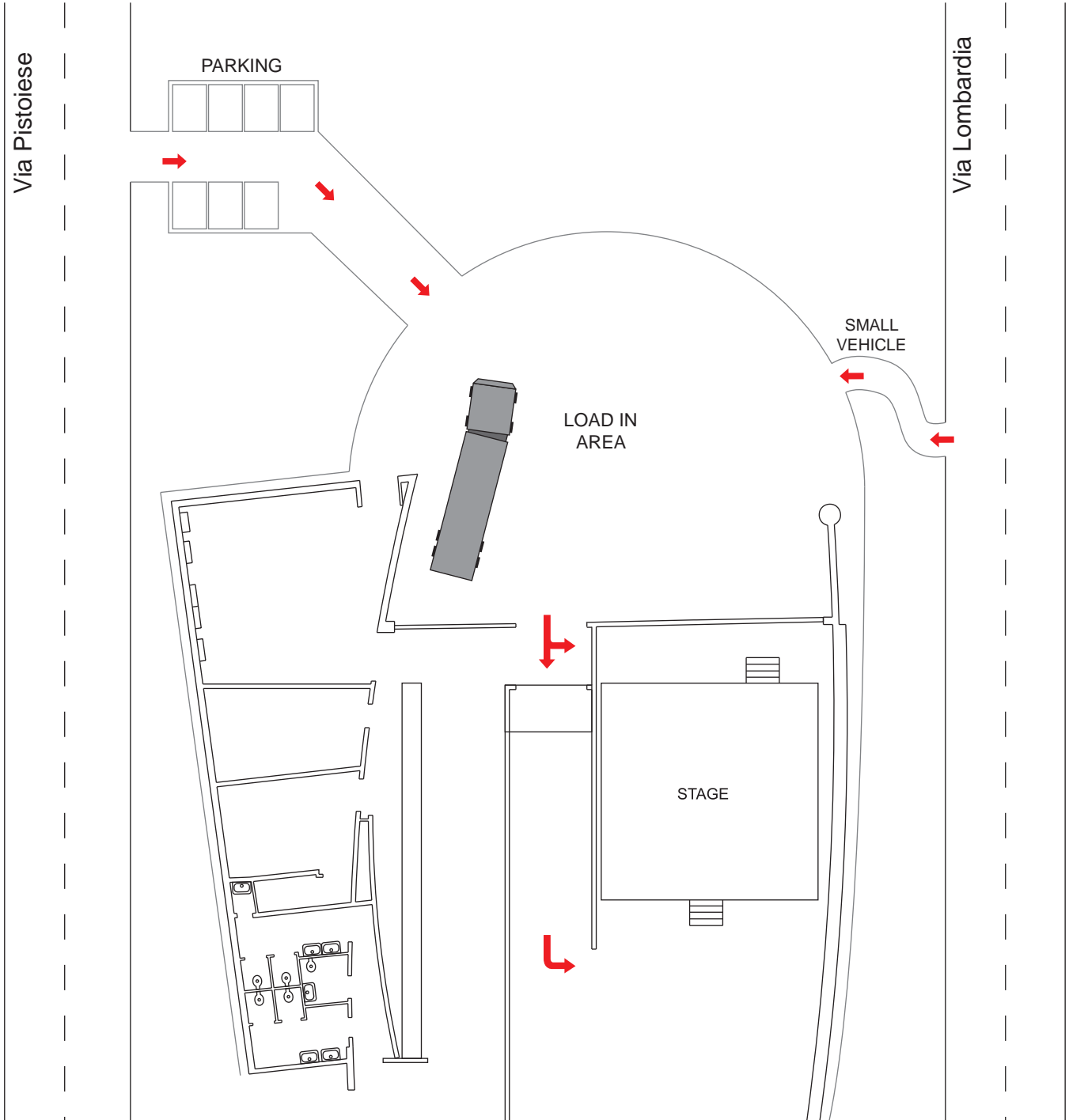
ENTRY PROCEDURES





LOAD IN DETAILS

Viper Theatre load in is on Via Lombardia backdoors.
Access through a parking area in Via Pistoiese.
Three steps to the stage.





LOAD IN DETAILS

Viper Theatre load in is on Via Lombardia backdoors.
Access through a parking area in Via Pistoiese.
Three steps to the stage.

AREAS & PASSES

Viper Theatre has unique areas for your use:

1. Production office
2. Dressing room + shower and toilette

Below are the passes which are needed for those areas:

AAA: Access all areas-escorting/not escorting-please specify

Crew: Access all areas except dressing rooms-not escorting

BACKSTAGE PASS

All musicians and crew (and any guest), who will be backstage during the evening, must wear a backstage pass. Please tell the host how many backstage passes you need. It is very important that everybody wear them, since the guards have the same information. The guards do not let people backstage, if they do not wear a backstage pass.

WI-FI CONNECTION

Wi-fi connection is provided in the whole building.

ACCOUNTS

Accounts will be settled with the host after the concert.

GUEST LIST

The number of guestlist includes the number, which has been negotiated in the contract.
In case of deviations the host must be contacted in advance.

SALES OF MERCHANDISE

Merchandise cannot be placed at the entrance due to the fire authorities. Therefore we kindly ask you to place it in the corner next to the box office. If you have any doubts, please ask the host.



HIRE DEAL

What you can expect as part of your hire fee:

- 780 standing capacity venue + sound and lights.
- One house manager, one house technician.
- One fully equipped production office with WIFI access

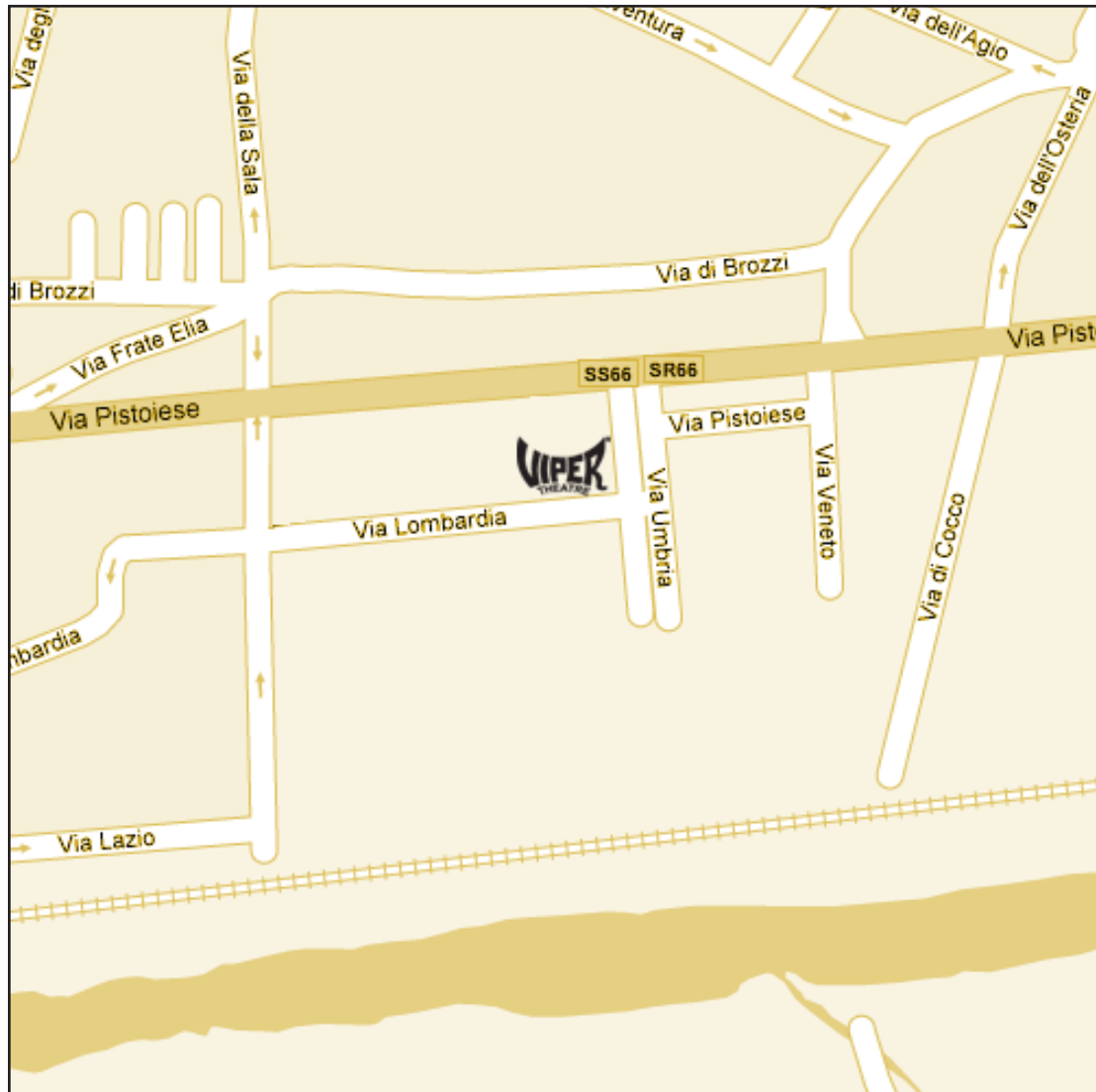
What you cannot expect as part of your hire fee:

- Viper theatre experienced guest list person
- Use of our foyer box office and tickets machine
- Security staff
- Extra technical staff
- Supply of towels
- Any damage to the venue or equipment will be charged for

Please note Viper theatre is not responsible for any equipment left in any part of the venue



TRAVEL INFO



EMERGENCY INFO

Police: Rifredi Peretola police station, Via Sgambati 21, tel : 055/323886.
A&E: Ospedale Careggi (Firenze), Viale Morgagni n. 85, tel : 055/4277247
Accident and emergency general tel:118
Fire:115



RECOMMENDED RESTAURANTS IN THE AREA

Paladar

Via Pistoiese n 315
Firenze - Tel. 055/317228 - Cell. 338/3737710
email: as.paladar@yahoo.it

Trattoria Da Burde

Via Pistoiese n. 154
Firenze,tel.055/311329

Xiang Shun- Great Chinese restaurant

Via Della Saggina n.2
Firenze,tel. 055/319234

Aluisius-Restaurant and pizzeria

Via Pistoiese n. 2/r
Firenze, tel.055/308653

HOTEL NEARBY

Eurohotel

Via Pistoiese n.30
Tel:055/319234

Cosmopolitan Hotel

Via Baracca n.187
Tel:055/4225800

Mirage hotel Golden Tulip

Via Baracca n.231/18
Tel:055/352011

Novotel

Via Tevere n. 23 Firenze
Tel. 055/308338 - Fax: 055/308336.

La Spiga

Via Pistoiese n. 50
San Donnino Firenze
Tel 055/8964025 - Cell. 3407112610 - Fax 055/8964025.