

VIPER THEATRE

SEASON 2022/2023



TECHNICAL RIDER & HOSPITALITY

VER.1.1

TECHNICAL RIDER HOSPITALITY

www.viperclub.eu/files/vipertheatre-productionbible.pdf

PREMESSA

Il presente regolamento è parte integrante del contratto per l'esecuzione dei spettacoli all'interno del Viper Club, tra l'organizzazione e gli artisti/band/ management dell'artista.

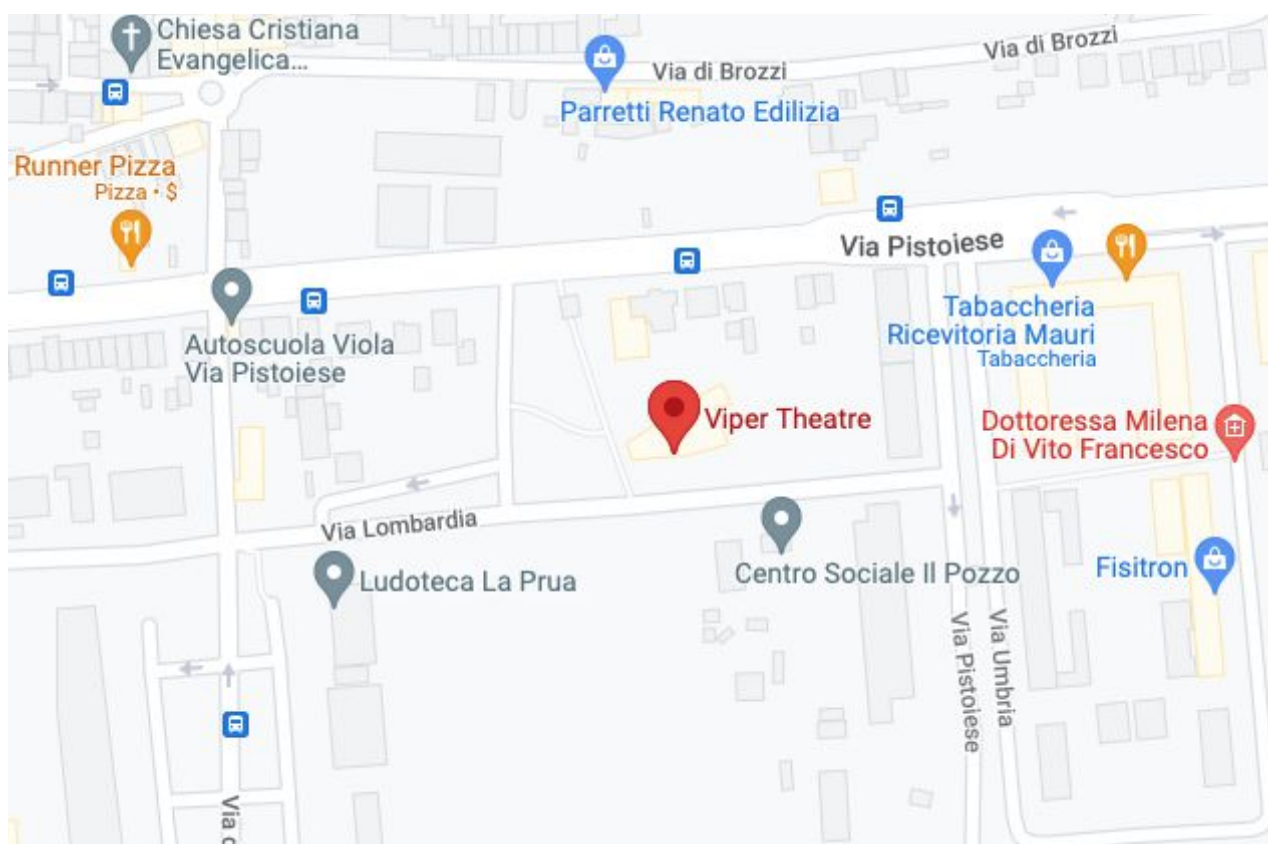
Lo scopo di questo breve documento è quello di agevolare il più possibile il lavoro e l'esecuzione artistica dello spettacolo all'interno del Viper Club.

Le schede tecniche dell'artista devono pervenire entro e non oltre il 15 giorni dalla data.

REFERENTI

DIREZIONE	MARCO CACIAGLI	+39 335429298	info@viperclub.eu
RESP. TECNICO	STEFANO BECHERI	+39 3385060253	spageti@tin.it
RESP. PRODUZIONE	LEONARDO GIACOMELLI	+39 3474730894	leonardo@realitybites.it
ACCOGLIENZA	DILETTA MAZZINGHI	+39 3381032283	diletta@realitybites.it
UFF. STAMPA			

MAPPA





STAGE & POWER

PALCO: 8 mt. x 8 mt. x 1 mt.
AREA TECNICA PALCO: 2,50 mt. x 2,50 mt.
STAGE CLEARANCE: 3,90mt
BARRIERE ANTIPANICO: 8
FORNITURA TOTALE CORRENTE: 90 kw

AUDIO EQUIPMENT

PA:

- 08 x Martin Audio W8LC
- 04x Martin Audio WS218X
- 08x Lab Gruppen FP3400 Power Amplifiers
- 02x XTA DP 426 processor
- 01x Multichord 32/8 passive
- 02x cat6 multichord (foh/stage R)
- 02x cat5 multichord (foh/stage R)

F.O.H.

- 01 x Midas M32 32/16

STAGE:

- 01 x Midas M32 32/16
- 08x Martin Audio LE1200 (wedges)
- 02x HandK18in (stage sub)
- 04x Lab Gruppen ip2400 2ch power amplifiers
- 03x Subsnakes 8ch

RAISERS:

- 03x PAV 20/40/60/80/100

MIC STANDS:

- 12x Tall Boom Stands
- 04x Short Boom stands
- 02x Mini Boom

DJ STUFF:

- 01x Pioneer DJM-800
- 02x Technics SL-1210 MK2
- 01x Allen Heat X-one 92
- 02x Pioneer Cdj 100
- 01x Technics SL-1200 MK2

DI BOXES:

- 10 di box

WIRELESS MICS:

- 2x SM58 handheld radio + Digital receiver



MICROPHONES:

- 06X Shure Sm58
- 02x Shure Beta58
- 06x Shure Sm57
- 03x Akg 451
- 01x Sennheiser e602
- 01x Sennheiser e902
- 04x Sennheiser e604
- 01x Shure Beta91
- 01x Shure Beta52
- 02x Shure Sm81

LIGHT & VIDEO EQUIPMENT

- 01x Dmx To Stage (Universe 1)
- 01x Dmx To Stage (Spare)
- 01x Dmx To DanceHall (Universe2)

LIGHTING DESK

- 01x ChamSys PC Wing

LIGHTING STAGE (Universe 01)

- 06x Claypaky sharpy
- 04x Guiled LedWash Zoom
- 02x HX LedWash Zoom
- 08x Litecraft AT10 Led pars 240 volts
- 04x Sagomatori ETC 1000w 240v
- 04x Blinder 2 cells
- 01x Strobe 1500w
- 01x Standard smoke machine

LIGHTING SYSTEM DANCEHALL (Universe 2)

- 04x Hyb- eye k 15 wash moving head
- 02x HX LedWash Zoom
- 04x GuiLed ParLed IP65 6ch

VIDEO:

- 01x DVD player
- 01 x Epson EB-L520U Full HD VideoProjector
- 01x Motorized Projection Screen 4x3mt on backtruss

DANCEHALL AREA/BAR

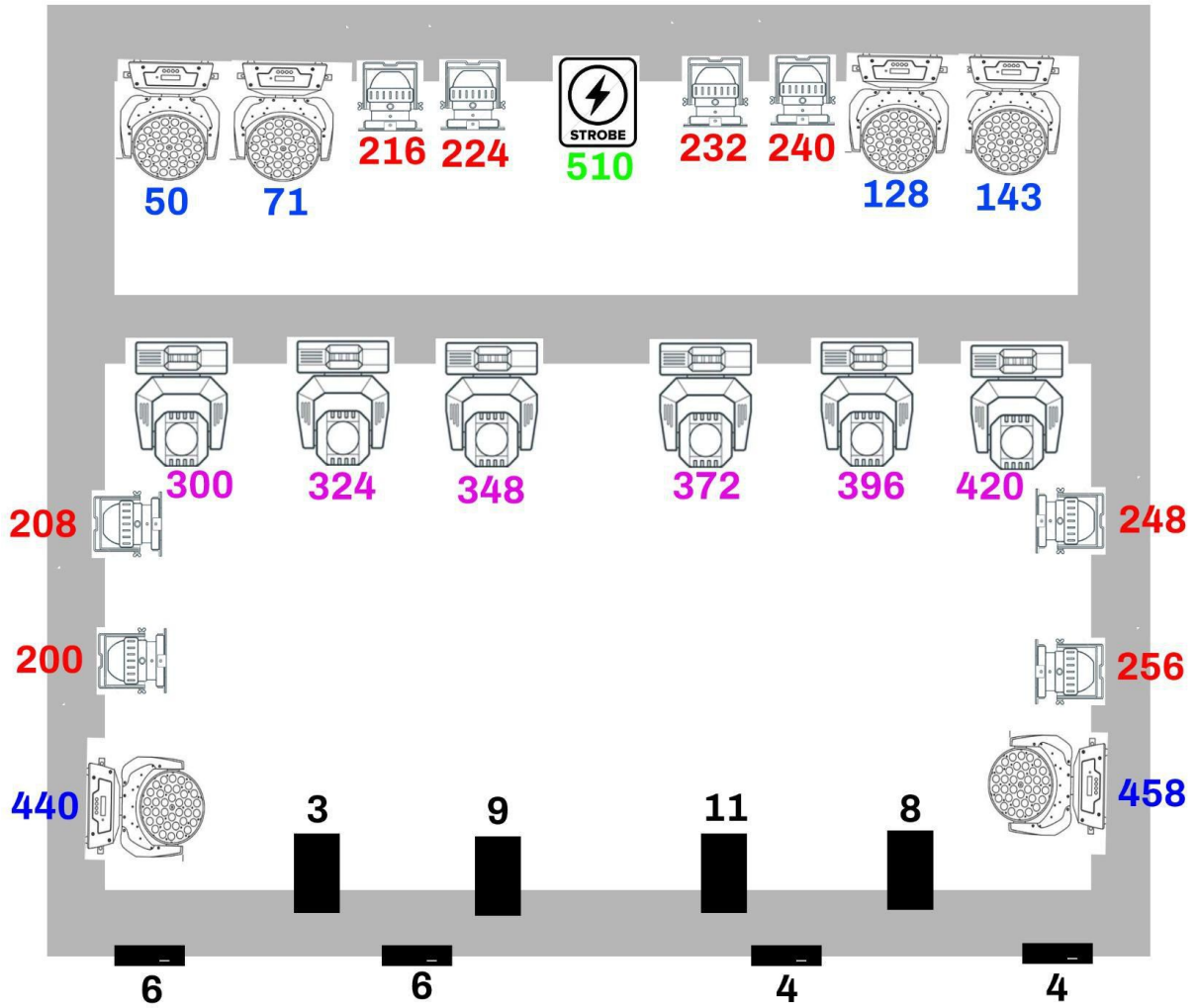
- 01x 42" Plasma screen



LIGHT PATCH

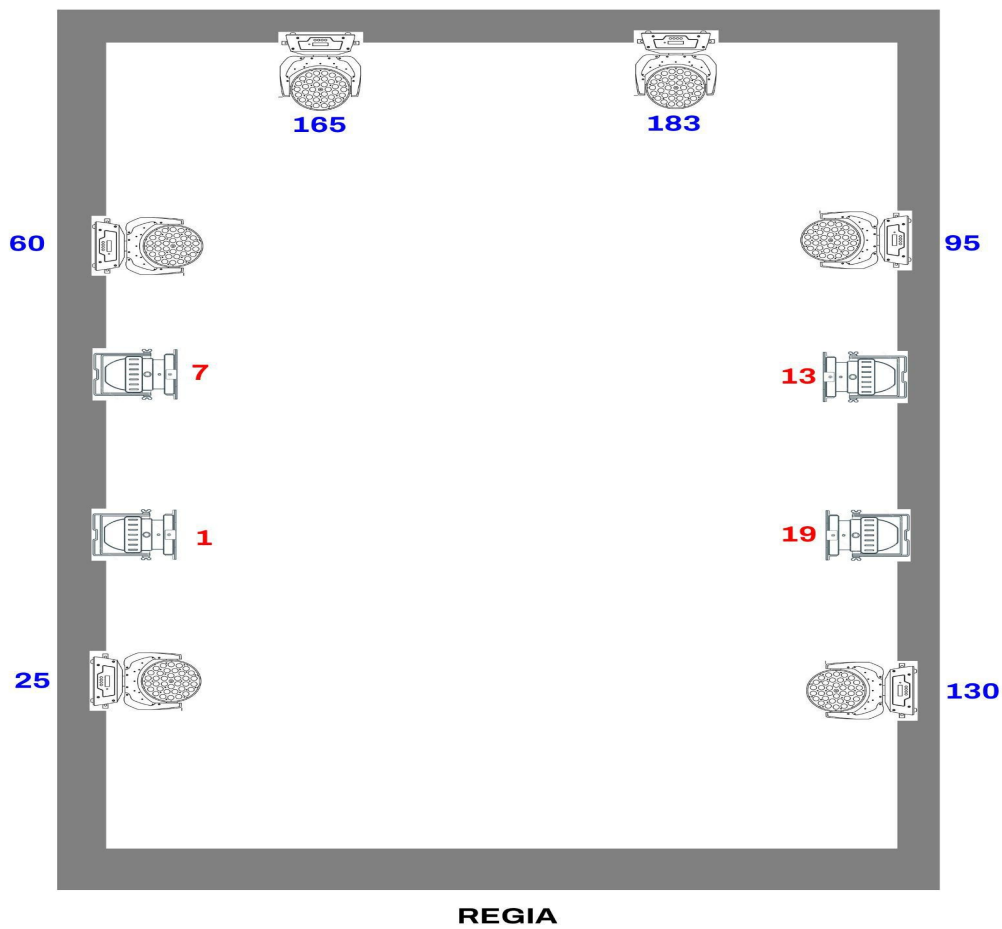
UNIVERSE 01 (STAGE)

03	- general dimmer	SAGO LL
04	- general dimmer	BLINDER R
06	- general dimmer	BLINDER L
08	- general dimmer	SAGO RR
09	- general dimmer	SAGO L
11	- general dimmer	SAGO 11
26		SMOKE
50	GUILED LED WASH ZOOM (15CH)	BACK LL
71	GUILED LED WASH ZOOM (15CH)	BACK L
128	GUILED LED WASH ZOOM (15CH)	BACK R
143	GUILED LED WASH ZOOM (15CH)	BACK RR
200	LITECRAFT AT10 (8CH)	PAR LED 1 L
208	LITECRAFT AT10 (8CH)	PAR LED 2 L
216	LITECRAFT AT10 (8CH)	PAR LED BACK LL
224	LITECRAFT AT10 (8CH)	PAR LED BACK L
232	LITECRAFT AT10 (8CH)	PAR LED BACK R
240	LITECRAFT AT10 (8CH)	PAR LED BACK RR
248	LITECRAFT AT10 (8CH)	PAR LED 2 R
256	LITECRAFT AT10 (8CH)	PAR LED 1 R
300	CLAY PAKY SHARPY (16CH)	SHARPY LLL
324	CLAY PAKY SHARPY (16CH)	SHARPY LL
348	CLAY PAKY SHARPY (16CH)	SHARPY L
372	CLAY PAKY SHARPY (16CH)	SHARPY R
396	CLAY PAKY SHARPY (16CH)	SHARPY RR
420	CLAY PAKY SHARPY (16CH)	SHARPY RRR
440	HX LEDWASH ZOOM	LEDWASH L
458	HX LEDWASH ZOOM	LEDWASH R
510	STROBO RATE	STROBO
511	STROBO INT	STROBO



UNIVERSE 02 (DANCEHALL)

01	GUILED PAR LED - 6ch	Par Led LL
07	GUILED PAR LED - 6ch	Par Led L
13	GUILED PAR LED - 6ch	Par Led R
19	GUILED PAR LED - 6ch	Par Led RR
25	CLAY-PAKY Hyb-Eye K15 Shapes - 35ch	SIDE WASH LL
60	CLAY-PAKY Hyb-Eye K15 Shapes - 35ch	SIDE WASH L
95	CLAY-PAKY Hyb-Eye K15 Shapes - 35ch	SIDE WASH R
130	CLAY-PAKY Hyb-Eye K15 Shapes - 35ch	SIDE WASH RR
165	HX LEDWASH Zoom - 18ch	FRONT WASH L
183	HX LEDWASH Zoom - 18ch	FRONT WASH R





MOVING HEADS PERSONALITIES TO BE “BUILT”



GUILKED LED WASH ZOOM (15 ch)

Ch1	Pan
Ch2	Panfine
Ch3	Tilt
Ch4	Tilt fine
Ch5	P/t speed
Ch6	Zoom
Ch7	Dimmer
Ch8	Shutter
Ch9	Wheel
Ch10	Color speed
Ch11	Red
Ch12	Green
Ch13	Blue
Ch14	White
Ch15	Reserved

HX LED WASH ZOOM (18 ch)

CH1	Pan
CH2	Tilt
CH3	Speed Pan/Tilt
CH4	Total Dimmer
CH5	First R Dimmer
CH6	First G Dimmer
CH7	First B Dimmer
CH8	First W Dimmer
CH9	First I Dimmer
CH10	First Y Dimmer
CH11	Total Strobe
CH12	Focus
CH13	Color Selection
CH14	Color Change Speed
CH15	Pan Fine Tuning
CH16	Tilt Fine Tuning
CH17	Reset
CH18	Empty



BACKLINE

DRUMS:

- MAPEX (22' - 10' - 12' - 14' - 16')
- 01 x Tappeto
- 01 x Sgabello
- 03 x Aste Giraffa
- 01 x Pedale
- 01 x Reggirullante

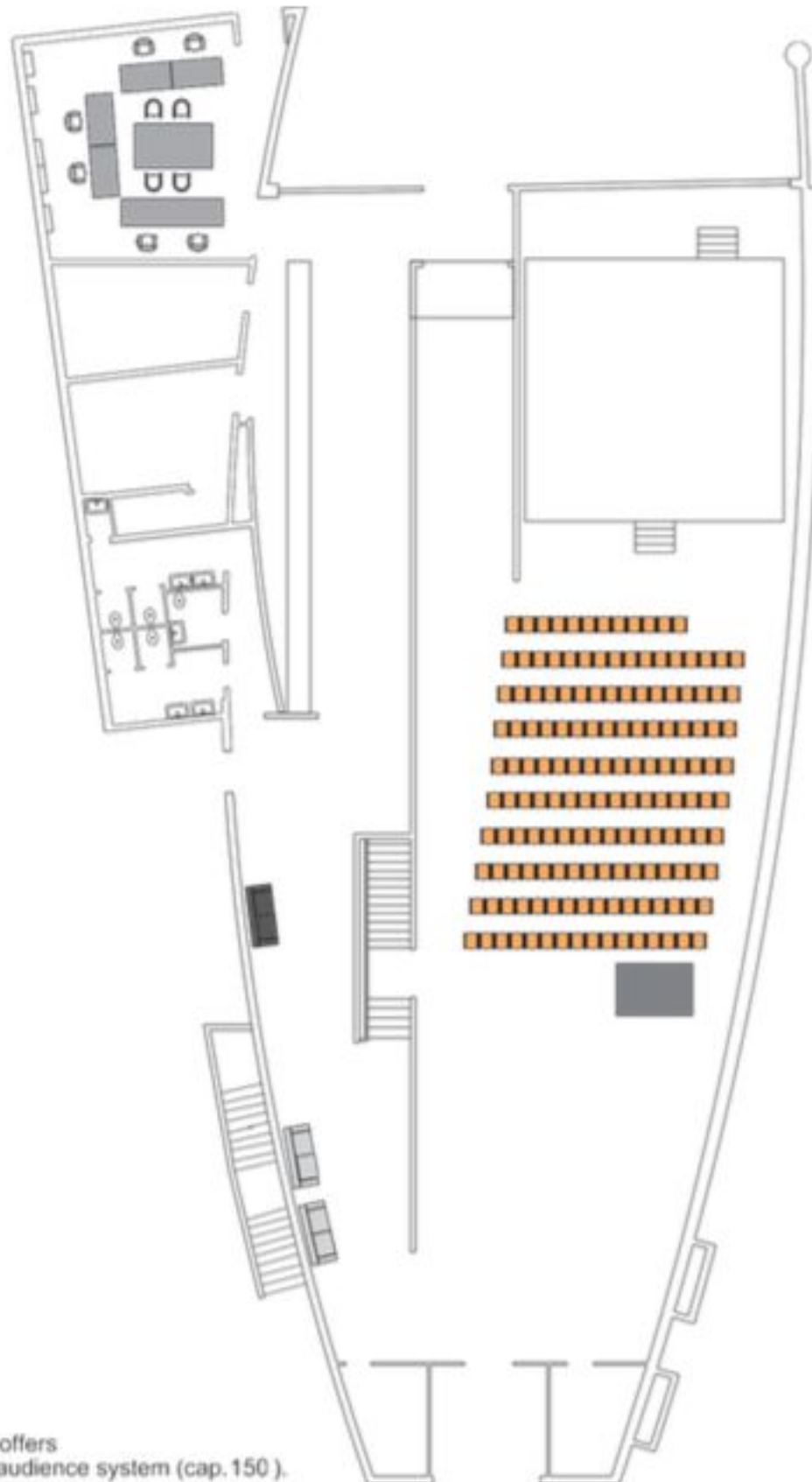
BASS AMP:

- 01x Ampeg SVT 4 pro Head
- 01x Ampeg 4 x 10 classic (NO REFLEX)
- 01x Mark Bass Big Band 500W Head
- 01x Mark Bass Traveller 151 Cabinet

GTR AMP;

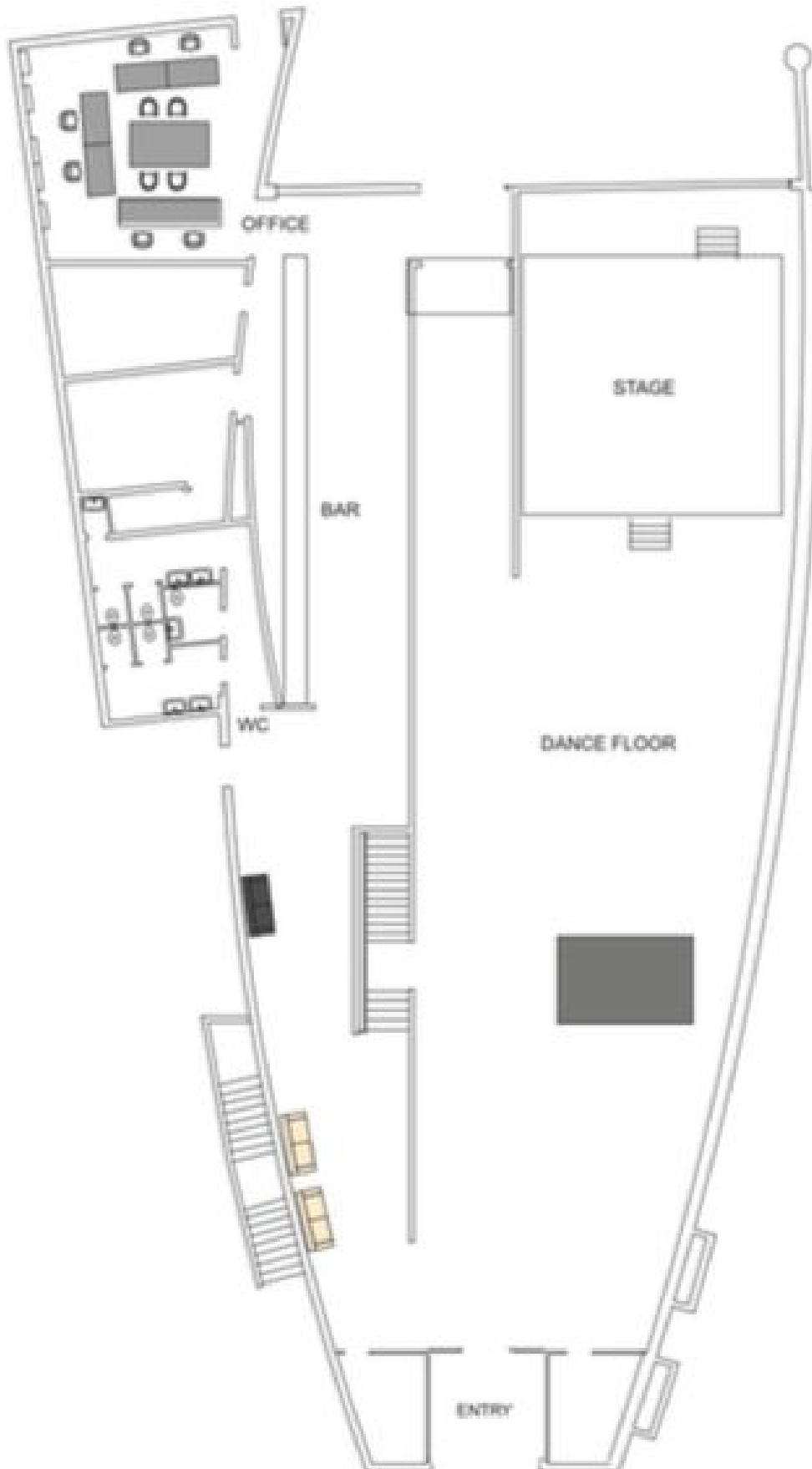
- 01x Fender The Twin
- 01x Marshall jcm 2000 + Marshall 4x12
- 02x Mezzabarba MZERO Overdrive Custom Heads
- 02x Mezzabarba MZERO 69 Cab

SEATED FORMAT



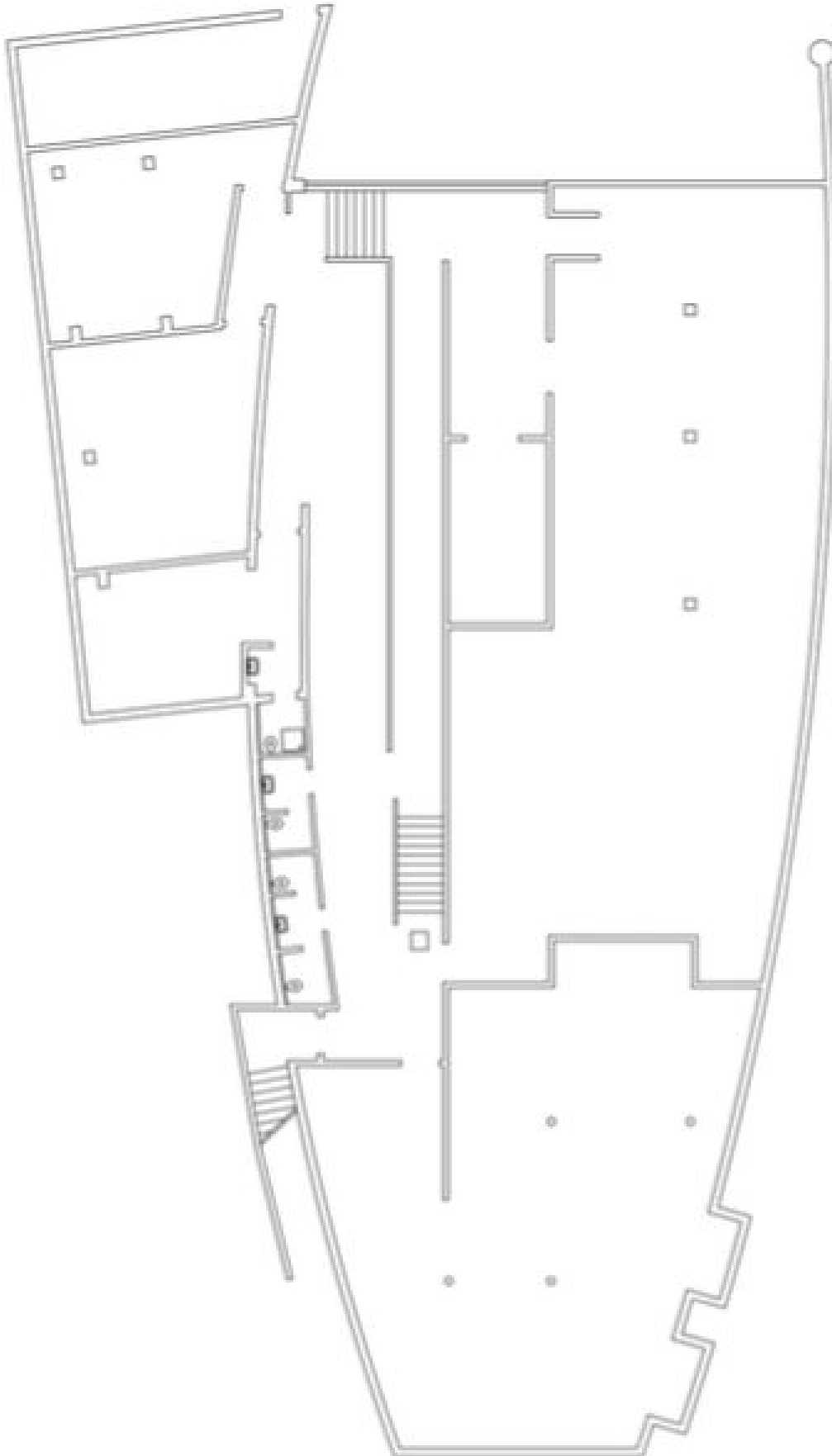
Viper Theatre offers
a fully seated audience system (cap. 150).

GROUND FLOOR





WER FLOOR





CAMERINI & HOSPITALITY

Nel backstage è presente:

- n.1 camerino privato con Bagno e doccia.
- n.1 stanza polivalente divisibile (camerino/ufficio produzione)
- n.1 area catering attrezzate

HOTEL

Abbiamo attivato convenzioni molto convenienti con alcune strutture alberghiere.

Tali convenzioni possono essere messe a disposizione degli organizzatori contattando la nostra **produzione**.

Hotel Cosmopolitan

Via Francesco Baracca, 187 - Firenze

Distanza Km 2,2

Hotel Franchi

Via Giovanni Sgambati, 28, 50127 Firenze

Distanza Km 3,3

Novotel

Via Tevere 23

Osmannoro, Sesto Fiorentino, 50019, Firenze

Distanza Km 3,6

Ibis

Via Volturmo 5,

50019 Osmannoro, Sesto Fiorentino, Firenze

Distanza Km 3,6

Star Hotel Tuscany

Via di Novoli, 59, 50127 Firenze Firenze

Distanza Km 4,7

Nil Hotel

Via Eugenio Barsanti, 27/b, 50127 Firenze

Distanza Km 6,6

CENA

Abbiamo attivato convenzioni con ristoranti per la cena delivery (o meno) in venue, le convenzioni sono su ogni tipologia di scelta:

- Cucina Italiana
- Cucina tipica toscana
- Cucina etnica
- Pizzerie

E' possibile scegliere la soluzione più congeniale contattando la nostra **produzione**.

MERCHANDISING

Abbiamo un area attrezzata con tavoli, corrente e luce.

Non è richiesta alcuna FEE, ma la presenza della Scia di Vendita, e di regolari casse fiscali.



PARTNERS:

